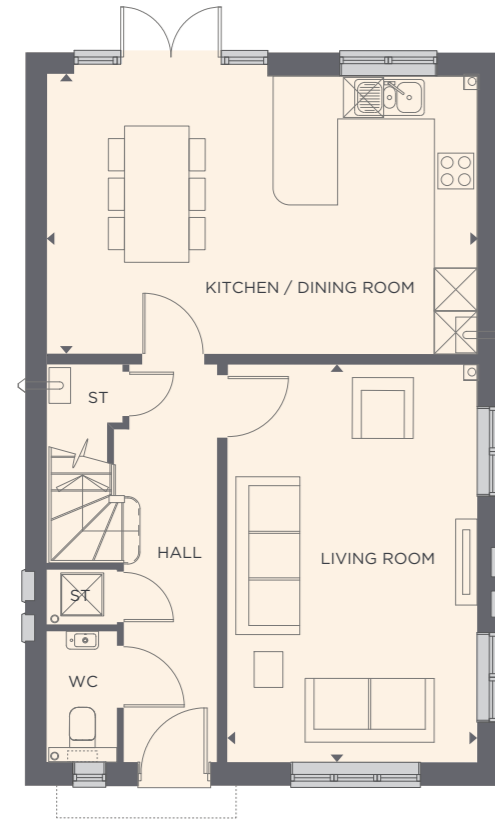


# 3 BEDROOM HOMES

(DETACHED)

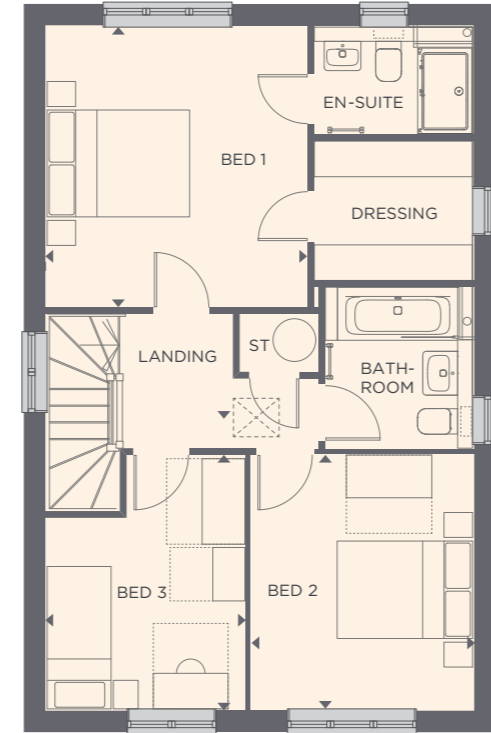
## PLOTS 2 & 31



### GROUND FLOOR

<b>KITCHEN/ DINING ROOM</b>	3.93 X 6.63 (12'10" X 21'9")
<b>LIVING ROOM</b>	3.53 X 5.59 (11'7" X 18'4")

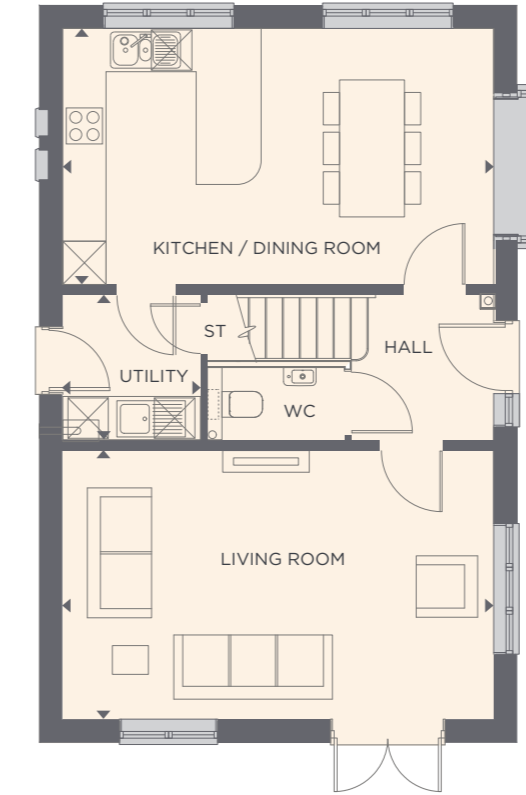
\*Floor plans are not to scale.  
All room dimensions are approximate and for general guidance only.



### FIRST FLOOR

<b>BED 1</b>	3.65 X 3.97 (11'11" X 13'0")
<b>BED 2</b>	3.14 X 3.60 (10'3" X 11'9")
<b>BED 3</b>	2.80 X 3.60 (9'2" X 11'9")
<b>TOTAL AREA:</b>	110.9 m <sup>2</sup> (1193 ft <sup>2</sup> )

## PLOTS 3, 32 & 33

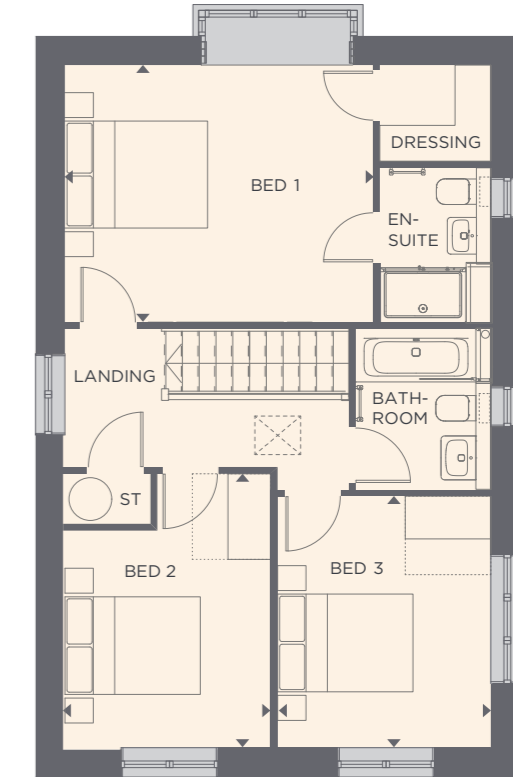


### GROUND FLOOR

<b>KITCHEN/ DINING ROOM</b>	3.60 X 6.02 (11'9" X 21'9")
<b>LIVING ROOM</b>	3.77 X 6.02 (12'4" X 21'9")
<b>UTILITY</b>	1.95 X 2.05 (6'4" X 6'8")

\*Plot 33 is a mirror image

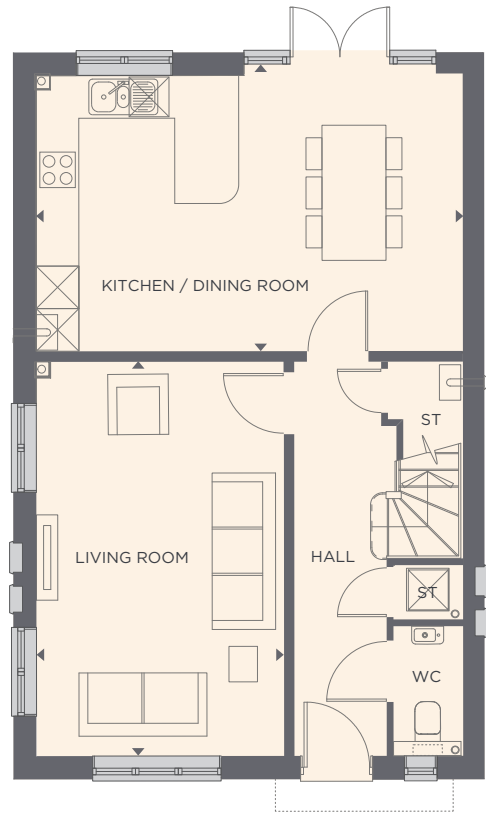
\*Floor plans are not to scale.  
All room dimensions are approximate and for general guidance only.



### FIRST FLOOR

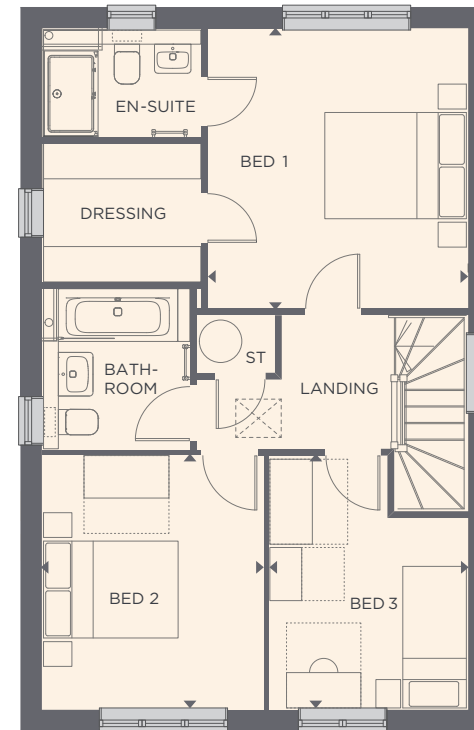
<b>BED 1</b>	3.64 X 4.36 (11'11" X 14'3")
<b>BED 2</b>	2.93 X 3.88 (9'7" X 12'8")
<b>BED 3</b>	3.03 X 3.57 (9'11" X 11'8")
<b>TOTAL AREA</b>	110.8 m <sup>2</sup> (1194 ft <sup>2</sup> )

## PLOT 26



### GROUND FLOOR

<b>KITCHEN/ DINING ROOM</b>	3.93 X 6.63 (12'10" X 21'9")
<b>LIVING ROOM</b>	3.53 X 5.60 (11'7" X 11'9")



### FIRST FLOOR

<b>BED 1</b>	3.69 X 3.97 (12'1" X 13'0")
<b>BED 2</b>	3.14 X 3.60 (10'3" X 11'9")
<b>BED 3</b>	2.80 X 3.60 (9'2" X 11'9")
<b>TOTAL AREA:</b>	110.8 m <sup>2</sup> (1193 ft <sup>2</sup> )

\*Floor plans are not to scale.  
All room dimensions are approximate and for general guidance only.